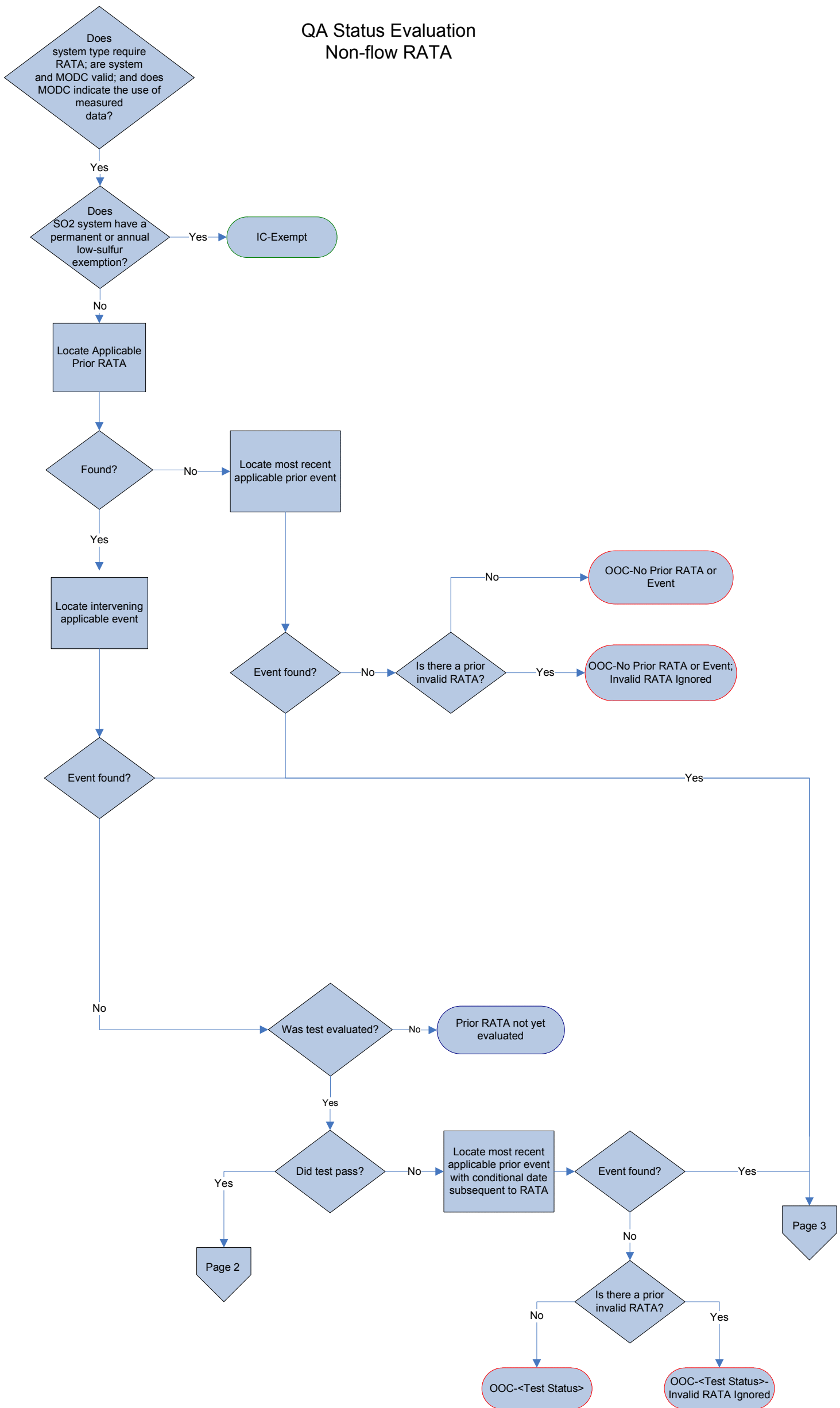
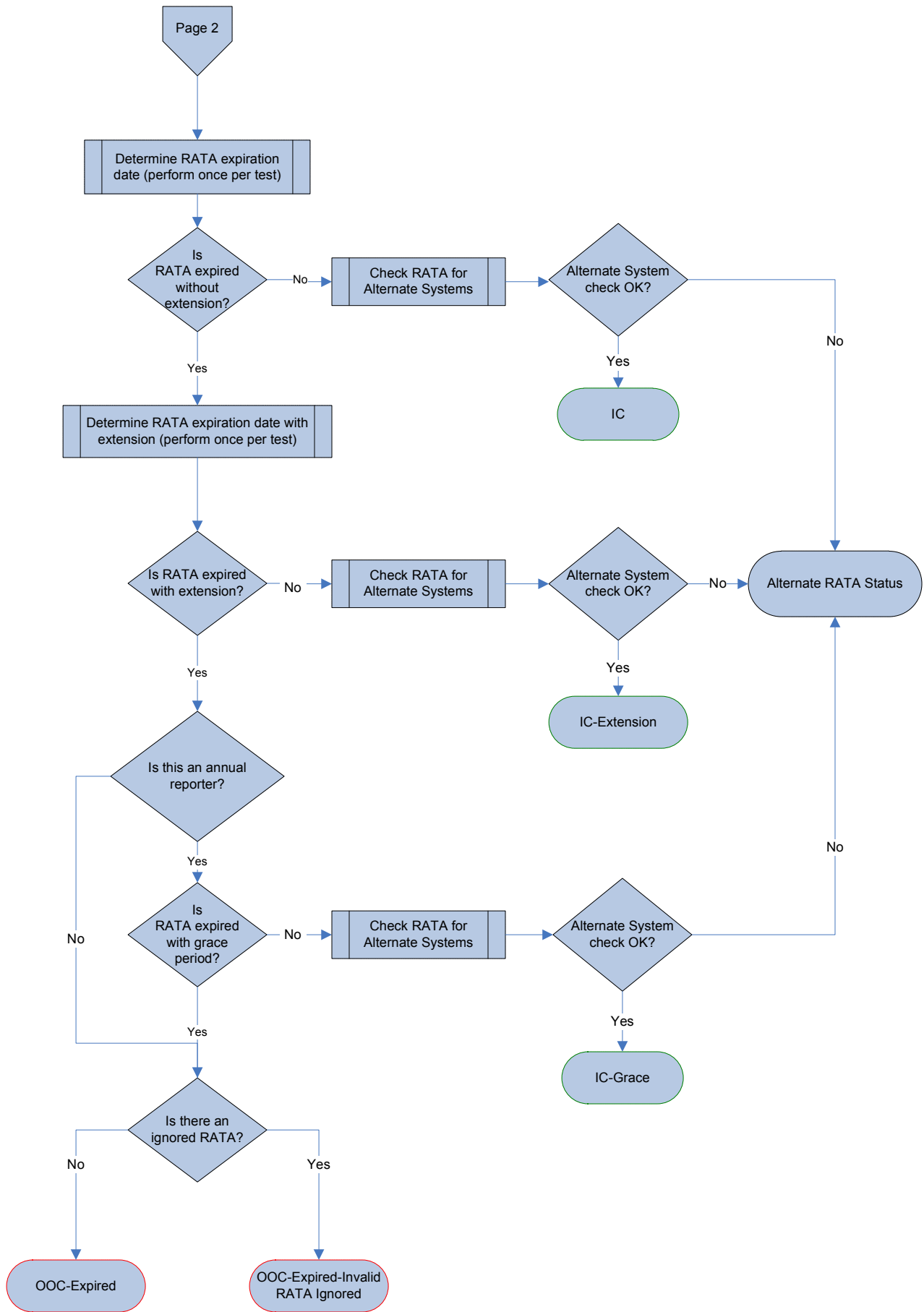


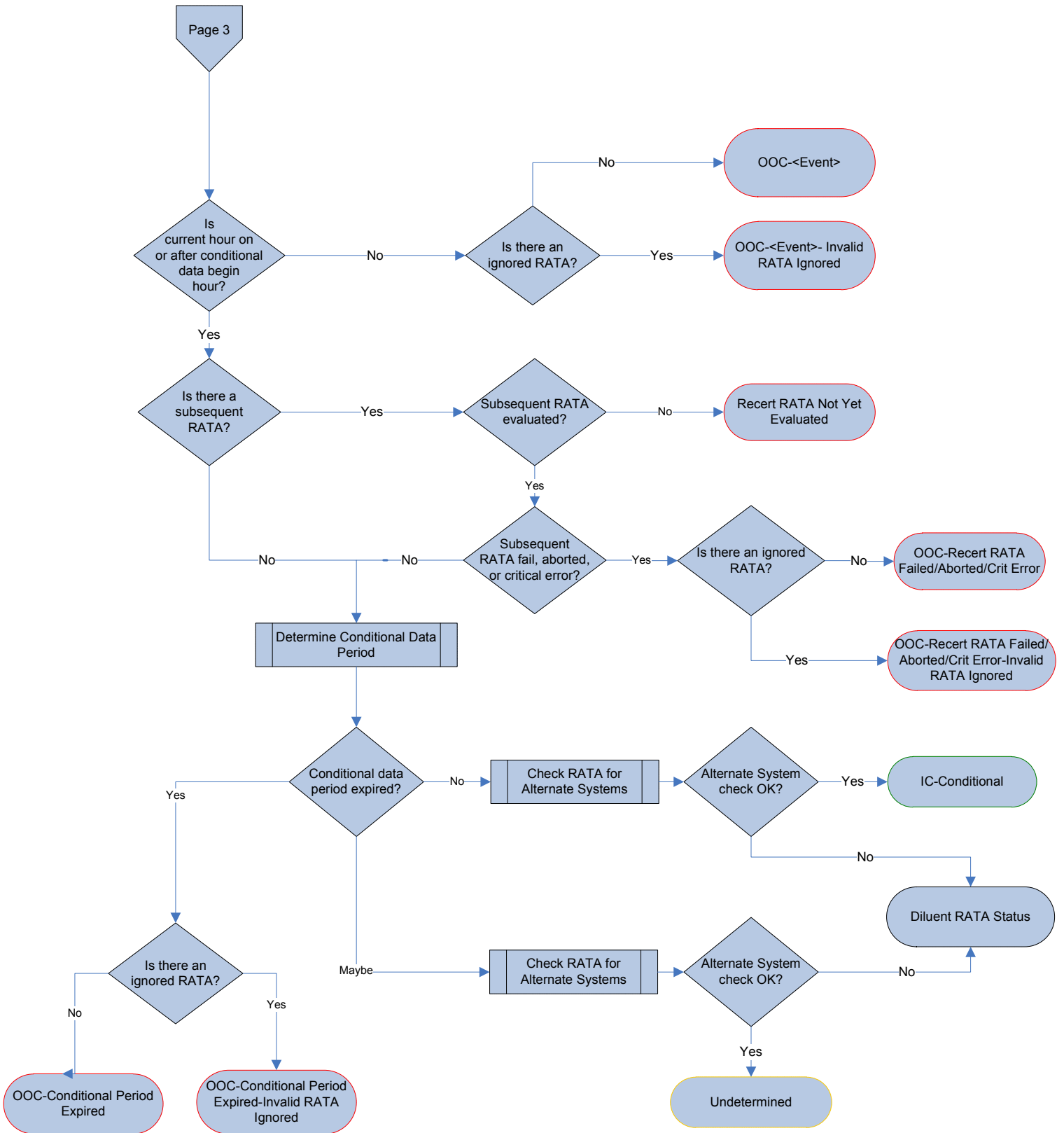
# QA Status Evaluation Non-flow RATA



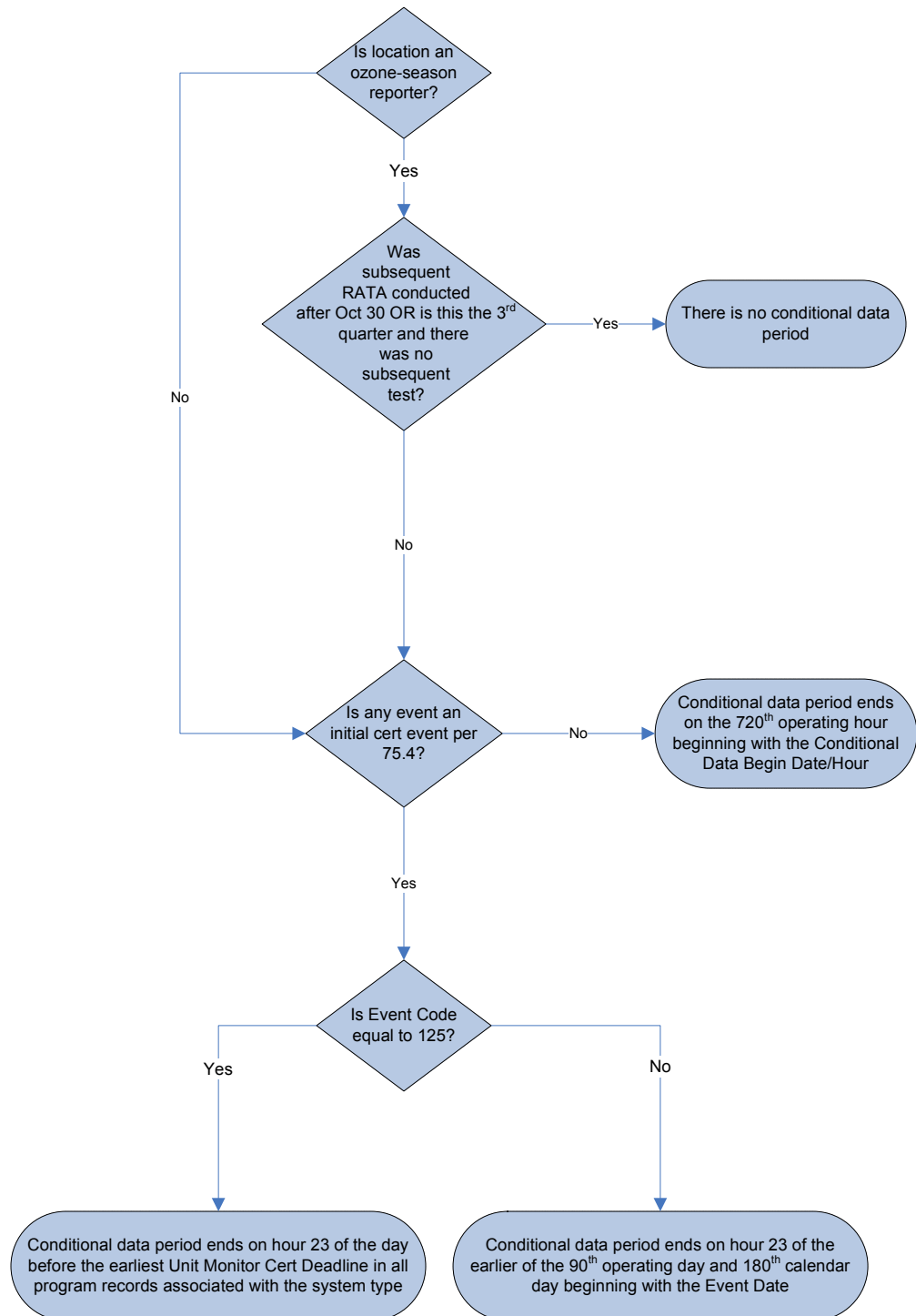
# QA Status Evaluation Non-flow RATA



# QA Status Evaluation Non-flow RATA

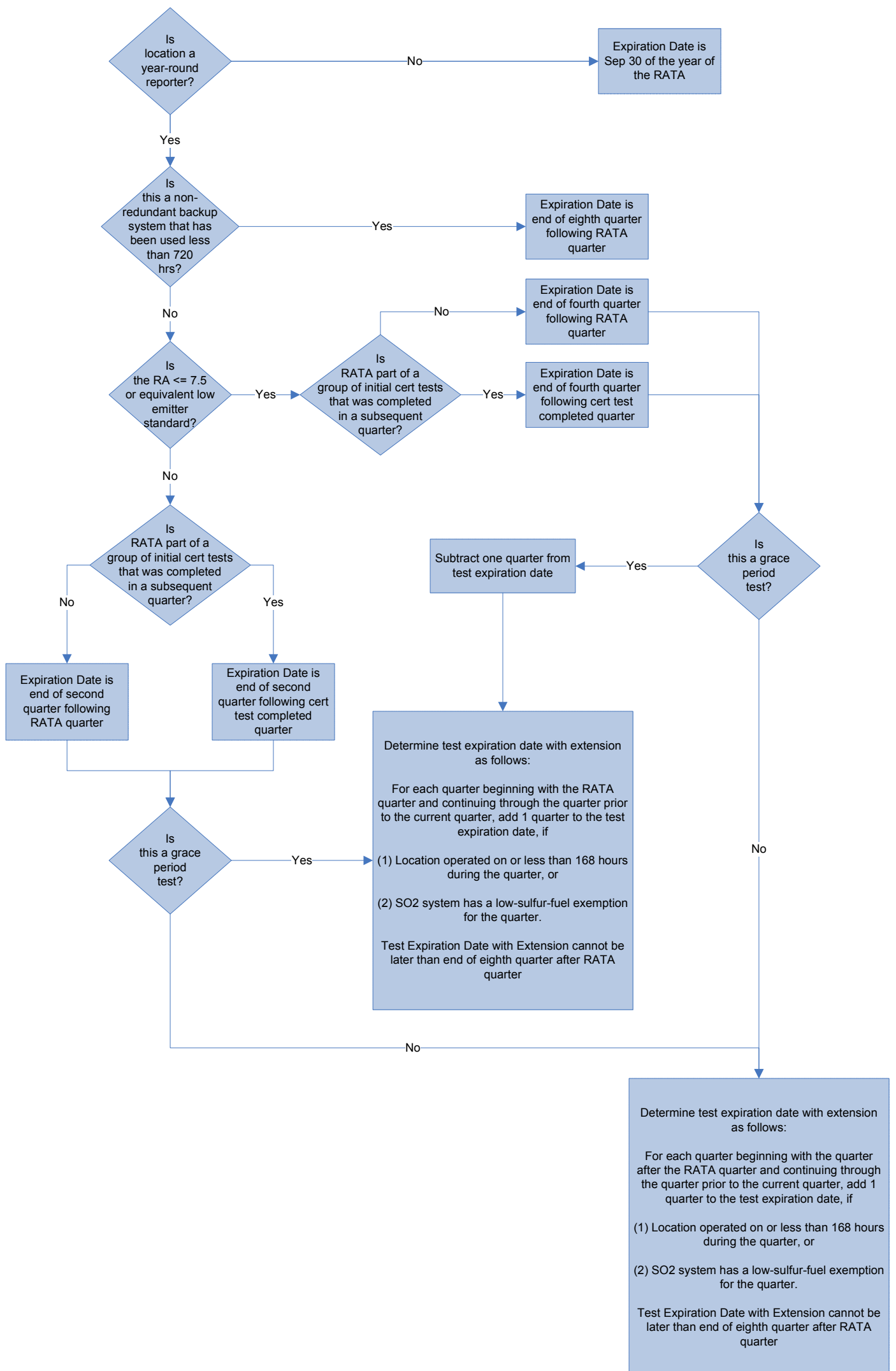


QA Status Evaluation  
Non-flow RATA – Determine Conditional Data Period End Date



# QA Status Evaluation

## Non-flow RATA – Determine Test Expiration Dates



QA Status Evaluation  
Non-flow RATA – Check RATA for Alternate Systems

